



<b>Briefing for:</b>	Corporate Parenting Advisory Committee
<b>Title:</b>	Performance Management Data in Children and Families – April 2011 data
<b>Lead Officer:</b>	Debbie Haith
<b>Date:</b>	27 June 2011

## **1. Background**

This report is an update of Children in Care National Indicators and other key performance information at the end of April 2011.

1.1 Note that the Government is currently undertaking a review of National Indicators and all statutory data returns. We will update members of any changes to our statutory reporting requirements following the outcome of this review but will continue to report on this data until such time.

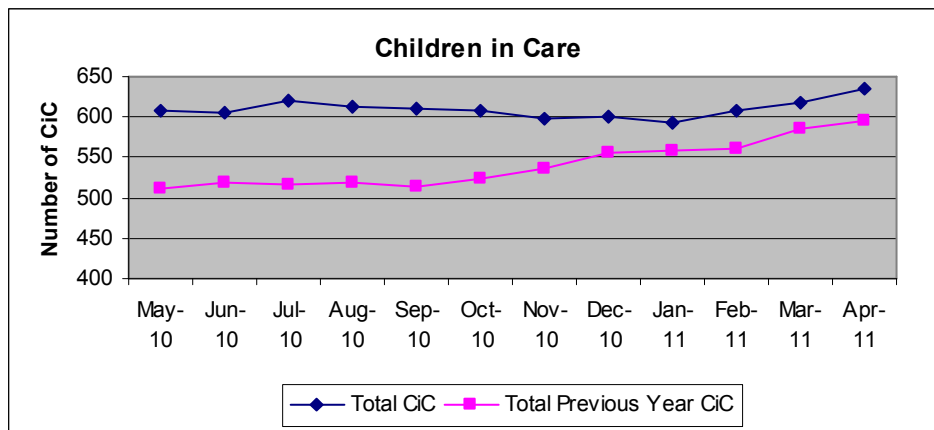
1.2 Haringey's Ofsted Statistical Neighbours group includes the following boroughs:

- Croydon
- Greenwich
- Hackney
- Hammersmith and Fulham
- Haringey
- Islington
- Lambeth
- Lewisham
- Southwark
- Waltham Forest
- Wandsworth



**2. Children in Care Performance Data – 30 April 2011 (a 2010/11 year-end report of all key child in care indicators with agreed 2011/12 targets will be presented to the next meeting of CPAC).**

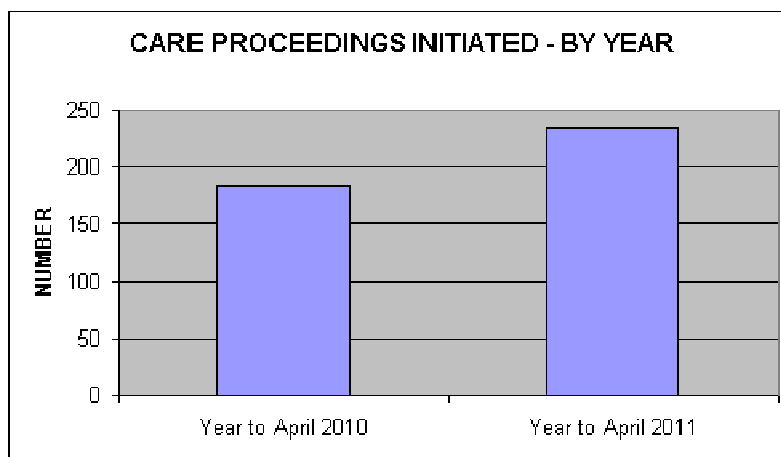
- 2.1 Following a sharp rise in numbers of children in care in 2009/10, although slightly higher, overall numbers of children in care stabilised throughout 2010/11. However, there was an increase in the proportion of care proceedings initiated in 2010/11 with 243 care proceedings initiated between April 10 and March 11 compared with 186 between April 09 and March 10, requiring more complex work and allocation of resource.
- 2.2 At the end of April 2011, there were 635 children in care (based on a manual calculation done mid-year, this equates to an estimated 400 families). This remains higher than comparator averages. 35 children became looked after in the month and 12 children ceased to be looked after in the month. The chart below shows the month by month changes to the total numbers of children in care compared with the previous year.



Children who Came into Care by Age – Apr 2011	
Age	Number
Under 1	6
1-4	5
5-9	9
10-15	11
16-17	4
<b>Total</b>	<b>35</b>



5 care proceedings were initiated in April. The graph below shows the increase in the 12 months to the end of April 2010 and the 12 months to the end of April 2011. This is around 30% higher than the previous 12 months.



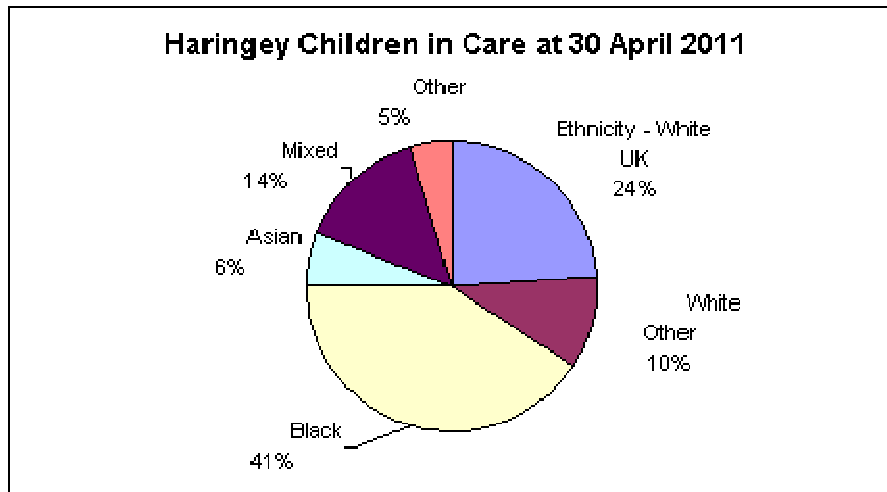
2.3 The total number of children in care at the end of April equates to a rate of 129 children per 10,000 population, a slightly higher position to that at the end of March 2010. The table below shows a breakdown of numbers of children in care in our statistical neighbour comparator boroughs and rates per 10,000 population of children under 18 at 31 March 2010. The graph shows the increase in the rate of children in care in Haringey over the last 3 years compared with our statistical neighbours and the national picture. Lambeth is demographically our most directly comparable borough.

	2009/10	2009/10 Rate Per 10,000
Hackney	305	59
Ham and Fulham	255	82
<b>Haringey</b>	<b>590</b>	<b>121</b>
Islington	315	94
Lambeth	565	105
Lewisham	525	90
Southwark	555	101
Wandsworth	205	41
Croydon	1010	126
Greenwich	590	111
Waltham Forest	340	63
SN Average		90
National Average		58

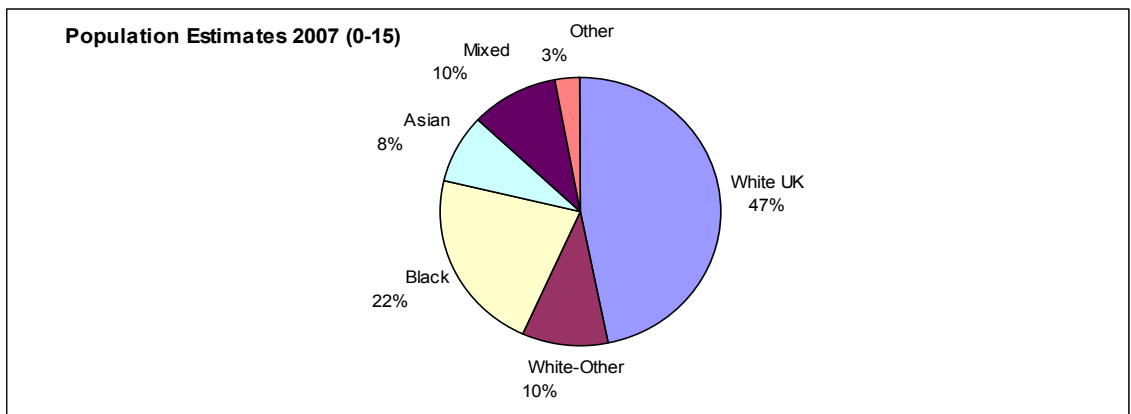


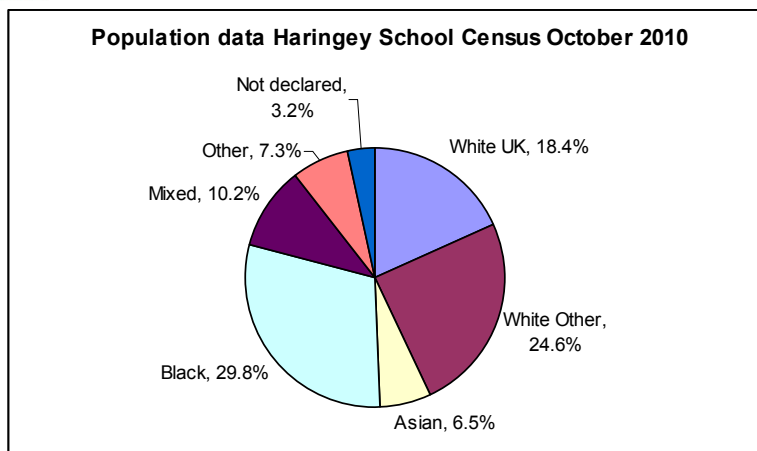
**Haringey Council**

- 2.4 Of the 635 children in care at the end of April 2011:
- 38 are unaccompanied minors (6%).
  - 12 children are those who have been placed in care as a result of the Southwark Judgement (16/17 year olds presenting as homeless) (2%).
  - 27 are children recorded with a disability and allocated to the children with disabilities team (4.3%).
- 2.5 The ethnic breakdown of children in care at the end of April is detailed in the charts below, this also shows a breakdown of 2001 census data on ethnicity of children aged 0-17 in the borough and the 2007 population estimates for children aged 0-15 in the borough (estimates are not available for 0-17 year olds as these only go up to working age and then beyond):

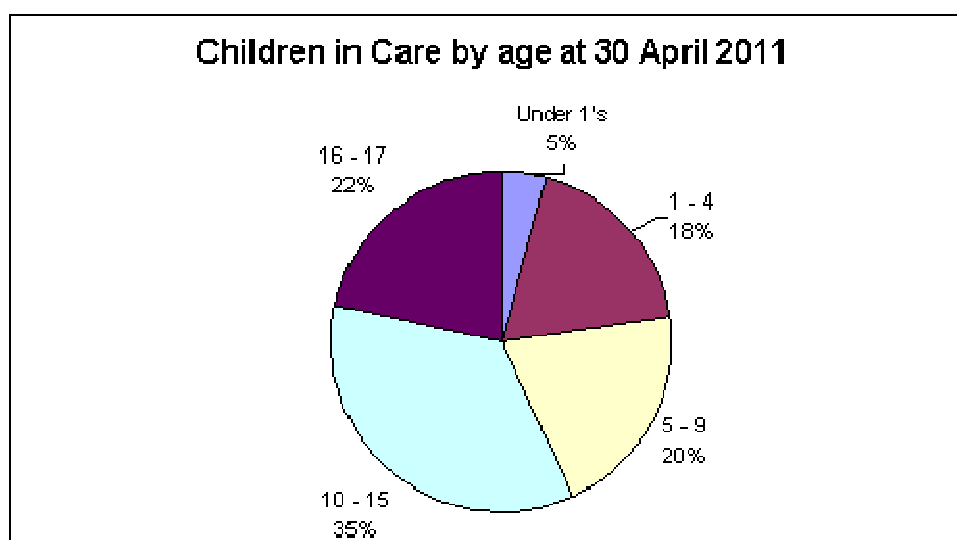


This chart shows that the largest proportion of children in care are black (41%), an over representation when compared with a school population of around 30% of under 18's or 22% of 0-15 (ONS population statistics).

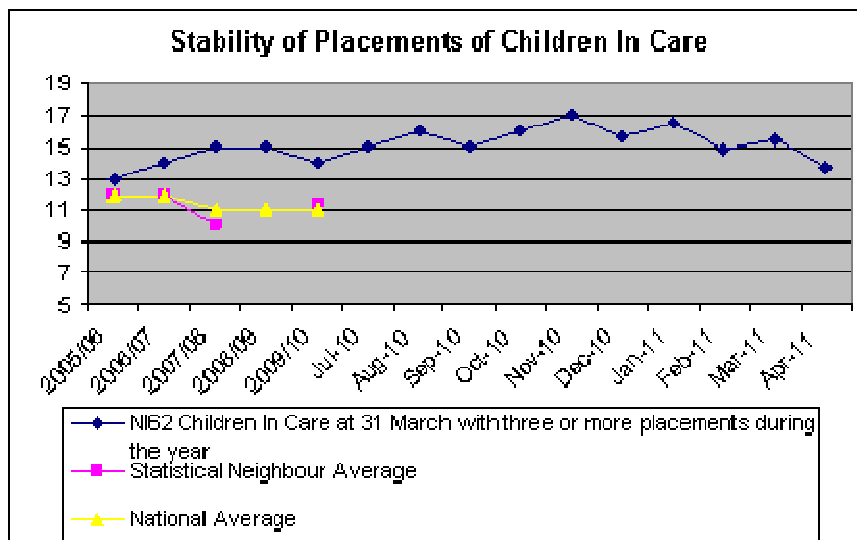




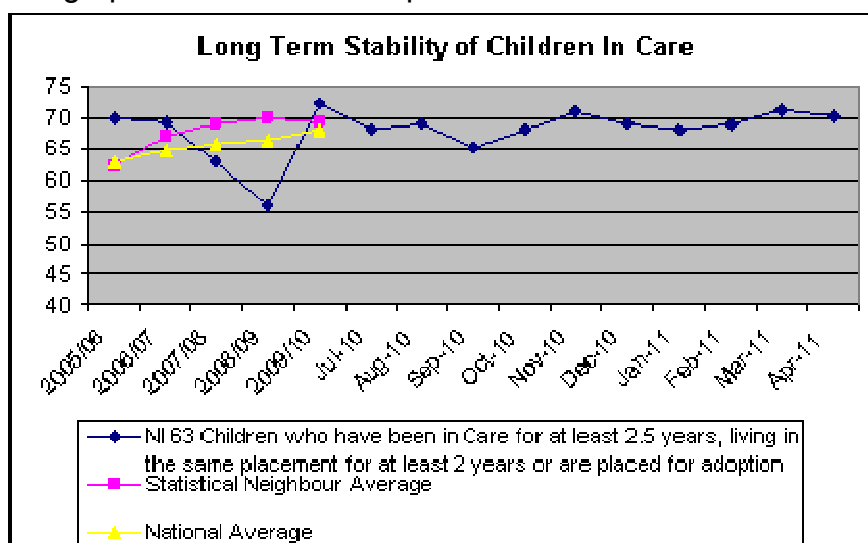
- 2.6 The age breakdown of children in care at the end of April is as detailed below, the largest proportion of children we currently work with are between 10 and 15 year olds (35%) and the smallest proportion is those under 1 (5%).



- 2.7 Children in care must have their circumstances and care plan independently reviewed every 6 months. 92% of children in care cases which should have been reviewed at the end of April, were reviewed in timescale, this is 14 who were not reviewed in timescale to date.
- 2.8 Placement stability– Good performance in this area is indicated as achieving less than 16% of children in care moving 3 or more times in the whole year. In the previous 12 months 13.7% of children have had 3 or more placements. The graph below shows comparative data for this indicator over the last 5 years:



2.9 NI63 – This is another measure of placement stability. 70% of children in care for 2.5 years or more had been in their placement for at least 2 years at the end of April 2011. This is 101 out of 144 children who were looked after for 2.5 years or more and in their placement for 2 years or more. The graph below shows comparative data for this indicator.



2.10 **Children placed out of borough** (note that a children placed in foster placements out of borough will include those placed with a Haringey foster carer living outside of Haringey). Around 70% of children looked after are placed outside of Haringey, the breakdown below details the proportion of children placed outside of Haringey by borough (note that this summary is based on December data and is updated quarterly – those shaded are those in our neighbouring boroughs).



Haringey placed in	Number of Children placed outside Haringey	% of children placed outside Haringey By LA
Enfield	97	16.1%
Other	95	15.8%
Waltham Forest	41	6.8%
Redbridge	23	3.8%
Barnet	21	3.5%
Islington	19	3.1%
Kent	16	2.6%
Croydon	13	2.1%
Essex	13	2.1%
Lewisham	10	1.6%
Bexley	9	1.5%
Camden	9	1.5%
Havering	7	1.1%
Hillingdon	7	1.1%
Medway	7	1.1%
Newham	7	1.1%
Ealing	6	1.0%
Epping forest	6	1.0%
Brent	5	0.8%
Hackney	5	0.8%
Surrey	5	0.8%

---

<b>Total placed out borough</b>	<b>421</b>	<b>70%</b>
---------------------------------	------------	------------

---

<b>Total CiC @ 31 Dec 2010</b>	<b>600</b>
--------------------------------	------------

---

\* Other = A combination of LA that have less than 5 Haringey children placed in them. These are Barking and Dagenham, Bedford, Birmingham, Braintree, Bromley, Buckinghamshire, Cambridgeshire, Cotswold, Cumbria, Derby, Devon, Doncaster, Dudley Metropolitan, Durham, Ealing, East Riding of Yorkshire, East Sussex, Epping Forest, France, Gravesend, Greenwich, Hammersmith and Fulham, Hampshire, Harrow, Hastings, Hertfordshire, Hertsmere, Hillingdon, Hounslow, Isle of Wight, Lambeth, Lincolnshire, Luton, Merton, Milton Keynes, Neath Port Talbot, North Norfolk, Oxfordshire, Powys County Council, Preston, Reading, Rochdale, Rochester, Shepway, South Gloucestershire, Southend on Sea, Southwark, Staffordshire, Stevenage, Stockport, Suffolk, Sutton, Telford & Wrekin, Tower Hamlets, Upminster, USA, West Sussex, Worcestershire, Worthing.



## Haringey Council

In addition, there are a number of children from other boroughs placed in Haringey. The breakdown by borough is tabled below:

Borough placing child in Haringey	Number of children
* Other	64
Islington	44
Enfield	29
Barnet	27
Camden	27
City of Westminster	11
Brent	10
Waltham Forest	10
Essex	8
Hammersmith & Fulham	8
Tower Hamlets	5
<b>Total</b>	<b>243</b>

\* Other = A combination of Local Authorities that have less than 5 Children placed in Haringey. These are: Bexley, Birmingham City Council, Calderdale Council, Coventry City Council, Croydon, Denbighshire County Council, Dundee City Council, Ealing, East Yorkshire, Greenwich Council, Hackney, Hertfordshire, Hillingdon, Hounslow, Kent County Council, Lambeth, Lewisham, Bromley, Luton, Milton Keynes, Manchester City Council, Newham, Peterborough, Redbridge, Rotherham, Kensington and Chelsea, Sheffield, Surrey, West Sussex, Westminster

- 2.11 Visits to Children in Care. 84% (532 out of 635) of children in care at the end of April (excluding those who came into care in the last week of the month) had a visit completed in timescale (6 weekly or 3 monthly where agreed by a manager).
- 2.12 A special guardianship order on 1 child has been granted in April and no adoption orders.
- 2.13 77% of children in care were placed in foster placements or placed for adoption at the end of April and 21% were placed in residential accommodation. The remaining proportion of children are placed at home or missing from placement.
- 2.14 We report on two performance indicators in relation to young people leaving our care. One is a sub-set of the overall Not in Education Employment or Training activity – 1 out of 3 of care leavers who turned 19 in April were in education training or employment on or around their 19<sup>th</sup> birthday.





## Haringey Council

2.15 2 out of 3 care leavers turning 19 in April were living in suitable accommodation on their 19<sup>th</sup> birthday.

2.16 Children missing from Care – April 2011. 3 children were missing from care at the end of April. New protocols have now been agreed for Care Homes and Foster carers to make a clear distinction between children absconding and children missing from care and the appropriate action to take depending on the assessed risk to the child/young person.

#### **4. Foster Carer Recruitment**

77% of all our children are placed in foster care. More than half are placed with carers provided by the independent sector. These placements are on average twice the cost of our in-house carers and often at some distance from the borough.

The pressure to increase the numbers of in-house foster carers is therefore significant and a considerable amount of work is underway to increase and improve our performance in this area – including the construction of a more accessible and professional website and improved marketing materials. In the month of April:

- We have had 49 enquiries
- 22 people attended information sessions
- 5 prospective carers attended initial visits. From this visit and assuming they are still interested and we believe they are potential carers, they will attend a 3 day training/preparation course and be taken through a lengthy and detailed assessment which is then presented to the Fostering Panel
- No new carers have been approved in April

From start to finish this process can take six months and there is generally a high attrition rate – 10% conversion from initial interest to be coming a carer is considered normal.